

The background of the cover features a repeating pattern of stylized fish shapes. Each fish is depicted in a light gray tone against a darker gray background. The fish are oriented horizontally, with their heads pointing to the left. Each fish has a circular eye, a curved dorsal fin, and a tail. The pattern is arranged in a staggered, overlapping fashion.

**Illumina**  
.....  
**SR Series**

**VERTEX AQUARISTIK**

**Owner's Manual**

# CONTENTS

.....

## Chapter 1: Getting Started

- 3 What You Need
- 3 Safety Considerations
- 4 Illumina SR Specifications
- 5 LED Pad Specifications
- 6 Components
- 6 Out of the Box

## Chapter 2: Basics

- 7 Getting to Know the Features
- 9 Installing Your Illumina SR
- 14 Operation
- 14 Button Controls
- 15 Menu Structure

## Chapter 3: Advance Features

- 16 Light Manager
- 18 Quick Motion
- 18 Settings
- 19 Info
- 19 Updating Your Illumina Firmware

## Chapter 4: Maintenance & LED Module Guide

- 20 Considerations and Guidelines
- 21 Cleaning the Central Air Shaft
- 21 Removing Dust and Debris
- 22 LED Modules
- 23 Firmware Upgrade

## Chapter 5: Additional Information

- 23 FAQ and Troubleshooting
- 24 Warranty Information
- 24 Contacts

**WARNING:** To avoid injury, read all the operating instructions presented within this guidebook. When using or installing electrical devices, take care and/or consult with a professional.

Be sure to follow all directions carefully – failure to do so may result in damage to your Vertex® Illumina and void the warranty

Dealers or the manufacturer are not responsible and cannot be held accountable for any personal/property damage and/or loss of livestock resulting from the misuse of products.

# CHAPTER 1: Getting Started

.....

## What You Need

Thank you for your purchase of the Vertex Illumina SR LED Fixture.

This User-Manual is your guide to getting the most out of your product. Please be sure to read all of the instructions present within prior to installing and operating your fixture.

Retain this manual in a safe place for later referral as required.

In order to properly use the Vertex Illumina, you will need:

- An aquarium or illumination subject appropriately sized to the length of your Illumina.
- A mounting point above the tank able to support the weight of your respective Illumina.
  - This mounting point will need to allow for two anchor points.
  - You will need to maintain at least 4" of height between the surface of the water/subject and the bottom surface of the Illumina.
  - There must be at least 5-6" of ventilated space around the Illumina at all times to allow for proper and thorough air circulation. The Illumina must, at no time, come into contact with any of the mounting surfaces and/or water.
  - The Illumina must be suspended in such a way as to protect it from any water spray or emergent plants or animals/objects.
- GFCI protected electrical outlets for each Mean Well driver. The outlets required are as follows:
  - SR 300 – One (1) outlet
  - SR 600 – One (1) outlet
  - SR 900 – Two (2) outlets
  - SR 1200 – Two (2) outlets
  - SR 1500 – Three (3) outlets
  - SR 1800 – Three (3) outlets

\* Please be sure to connect your Illumina only to electrical outlets of the proper voltage (110 or 220V). Failure to do so will result in failure of the unit and is not covered by warranty.

## Safety Considerations

Your Vertex Illumina has been designed to be used as a point source of illumination over an aquarium. Please note that while the unit is humidity resistant, it is NOT waterproof. It is absolutely crucial to mount the unit to a sturdy foundation. Direct contact with water will damage the unit and void warranty. We strongly recommend that installation only be performed by a certified professional.

Similarly, measures must be taken to keep all of the power sources, splitter control box and cables dry and protected from humidity. Exposure to water and/or salt will damage these components and void warranty.

# CHAPTER 1: Getting Started

---

## Illumina SR Specifications

### SR 300

#### Dimensions

300mm x 300mm | 12" x 12" Footprint  
32mm | 1.26" / 45mm | 1.77" Center Height

#### Weight

3.2 kg | 7.1 lbs

#### LED Modules

2

#### Auxiliary Slots

1

#### Mean Well Drivers

1

#### Fans

1 x SilenX Ixtrema Pro IXP-52-14

#### Performance

80W, 90-270 V / 50-60Hz

### SR 600

#### Dimensions

600mm x 300mm | 12" x 12" Footprint  
32mm | 1.26" / 45mm | 1.77" Center Height

#### Weight

6.6 kg | 14.55 lbs

#### LED Modules

4

#### Auxiliary Slots

3

#### Mean Well Drivers

1

#### Fans

1 x SilenX Ixtrema Pro IXP-52-14

#### Performance

160W, 90-270 V / 50-60Hz

### SR 900

#### Dimensions

900mm x 300mm | 12" x 12" Footprint  
32mm | 1.26" / 45mm | 1.77" Center Height

#### Weight

10 kg | 22.5 lbs

#### LED Modules

6

#### Auxiliary Slots

5

#### Mean Well Drivers

2

#### Fans

2 x SilenX Ixtrema Pro IXP-52-14

#### Performance

240W, 90-270 V / 50-60Hz

### SR 1200

#### Dimensions

1200mm x 300mm | 12" x 12" Footprint  
32mm | 1.26" / 45mm | 1.77" Center Height

#### Weight

13.6 kg | 30.0 lbs

#### LED Modules

8

#### Auxiliary Slots

7

#### Mean Well Drivers

2

#### Fans

2 x SilenX Ixtrema Pro IXP-52-14

#### Performance

320W, 90-270 V / 50-60Hz

# CHAPTER 1: Getting Started

---

## Illumina Specifications

### SR 1500

#### Dimensions

1500mm x 300mm | 12" x 12" Footprint  
32mm | 1.26" / 45mm | 1.77" Center Height

#### Weight

15.5 kg | 34.17 lbs

#### LED Modules

10

#### Auxiliary Slots

9

#### Mean Well Drivers

3

#### Fans

3 x SilenX Ixtrema Pro IXP-52-14

#### Performance

400W, 90-270 V / 50-60Hz

### SR 1800

#### Dimensions

1800mm x 300mm | 12" x 12" Footprint  
32mm | 1.26" / 45mm | 1.77" Center Height

#### Weight

19 kg | 41.9 lbs

#### LED Modules

12

#### Auxiliary Slots

11

#### Mean Well Drivers

3

#### Fans

3 x SilenX Ixtrema Pro IXP-52-14

#### Performance

480W, 90-270 V / 50-60Hz

## LED Pad Specifications

### I-260

#### LED Make

Cree

#### CHANNELS

##### White

XPG - 139lm/W

##### Royal Blue

XPE - 425mV

##### Blue

XPG - 30.6m/W

#### LEDs per Module

16

#### Performance

40W, 90-270 V / 50-60Hz  
50,000 hours @  $\leq 135^{\circ}\text{F}$  core  
diode temperature

### I-200 C

#### LED Make

Cree

#### CHANNELS

##### White

XPE - 100lm/W

##### Royal Blue

XPE - 350mV

##### Blue

XPG - 23.5m/W

#### LEDs per Module

16

#### Performance

40W, 90-270 V / 50-60Hz  
50,000 hours @  $\leq 135^{\circ}\text{F}$  core  
diode temperature

### I-200 P

#### LED Make

Philips

#### CHANNELS

##### White

REBEL - 100lm/W

##### Royal Blue

REBEL - 275mV

##### Blue

REBEL - 23.5m/W

#### LEDs per Module

16

#### Performance

40W, 90-270 V / 50-60Hz  
60,000 hours @  $\leq 125^{\circ}\text{F}$  core  
diode temperature

# CHAPTER 1: Getting Started

.....

## Components

Your Vertex Illumina SR will include the following components:

- Illumina fixture
  - Mean Well Driver(s) and their respective power cables:
    - SR 300-600 includes one Driver and Power Cable
    - SR 900-1200 includes two Drivers and two Power Cables
    - SR 1500-1800 includes three Drivers and three Power Cables
  - Vertex Illumina Splitter Box (900, 1200, 1500 & 1800 models only)
  - Suspension Kit containing:
    - Two ~200 cm / ~80" Aircraft Cable
    - Two light-mounted Cable Clamp Fittings (w/ Rubber Retaining Gaskets)
    - Two ceiling-mounted Socket Anchors
- .....

## Out of the Box

Your Vertex Illumina SR will come out of the box with the main body preassembled. You will not be required to install any LED Pads or electronics. Do not attempt to open your Illumina SR. Any installations requiring disassembly of the fixture should only be done by an authorized Vertex dealer.

Upon removing your Vertex Illumina from its package, examine the fixture and all of its components for any damages. After carefully inspecting the components and reading this guide, you will be ready to begin installation.

Note: Please take the following instruction into consideration before attempting to operate your fixture.

When attempting to connect the power cables to each of the Mean Well Drivers, ensure that the fittings form a firm union. **DO NOT CONNECT THE FIXTURE CABLE TO THE SPLITTER BOX YET.**

- 1.** Plug each of the power cables into a GFCI/Surge Protected electrical outlet.
- 2.** Connect the Mean Well Drivers to the Vertex Illumina Splitter Box, ensuring firm union.
- 3.** Plug the Illumina fixture cable to the Splitter Box. This last step will activate your Illumina and ready it for programming.

# CHAPTER 2: Basics

.....

## Getting to Know the Features

This section will detail help familiarize you with each of the Vertex Illumina's aspects and components:



### Vertex Illumina Fixture

The body of the Vertex Illumina is constructed from anodized, extruded aluminium and has been designed with the following considerations:

- Thermovap heatsink design with a high bypass airshaft exchange, central to an oversized bilateral heat sink.
- SilenX Ixtrema Pro IXP-52-14 fans produce less than 14dBm noise and move up to 24 CFM each.
- Onboard, programmable control panel with built-in wireless network functionality (w/ V-Link accessory).

- Streamlined one-cord construction for all fixture lengths and models serving to effectively minimize clutter, preserving the aesthetics of the fixture.
- Two adjustable suspension bridges allow for maximum suspension flexibility during installation.
- Modular LED pad platform requires no wiring or soldering for any replacements or upgrades.
- Auxiliary slots located between each of the LED pads allow for nearly limitless spectral compositions.

### NOTES:

- The Vertex Illumina is meant to be suspended above a display. Though humidity resistant, it is not waterproof. Be sure that it is mounted and protected from water spray coming from overflows and/or splashing and bubbling water.
- Do not attempt to move the LED pads within the fixture. They are set in place to allow for exact placement of auxiliary LED pads and sealed with a thermal paste backside.
- Do not clean with harsh acidic or alkaline cleaners/solvents which may destroy the finish.
- Do not set the fixture on top of any surfaces while it is running - you will damage both the surface and the LED splash shield. These types of damages are not covered by the warranty.

# CHAPTER 2: Basics

## Getting to Know the Features



### Mean Well AC Adapter / Driver Unit

- 160W / 220W AC-DC Single Output Desktop Adapters comply with worldwide energy regulations for external power supplies, including ENERGY STAR, EISA 2007, and MEPS.
- Very low No-Load power consumption (<0.5W) and up to 94% efficiency; offers energy-saving characteristics in both standby and active modes.

#### NOTES:

- Non-waterproof part. Keep away from humidity.



### Vertex Illumina Splitter Box

- Connection Indicator confirms operating connection between Driver and Illumina fixture.

#### NOTES:

- Non-waterproof part. Keep away from humidity. Can be affixed using the side brackets.
- Be sure to follow the connection procedure before connecting the Control Cable of the Illumina to the Splitter Box.



### Vertex Illumina Suspension Kit

- High-tensile Steel Aircraft cables and cable clamp fittings provide secure, durable suspension and maximum installation flexibility.

#### NOTES:

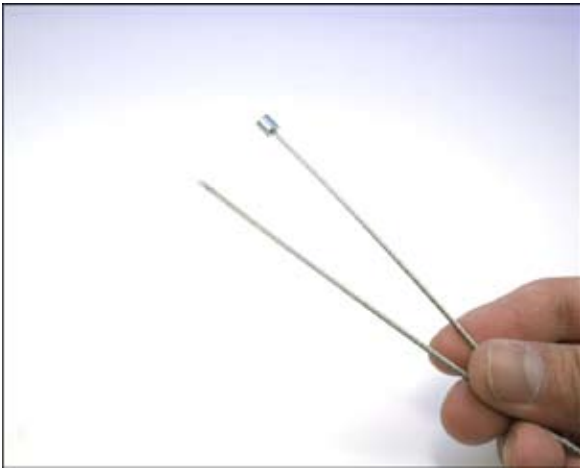
- As the unit is heavy, please note the weight of your Illumina fixture and consult with an expert prior to installation over the display.

# CHAPTER 2: Basics

.....

## Installing Your Illumina SR

Please read the following instructions thoroughly and consult with an expert before installing your Illumina. The fixture should always be located above your display in a well-ventilated space and should not be touching any surfaces once suspended. Locate the unit away from areas of high humidity and/or water and salt spray.



### Cables

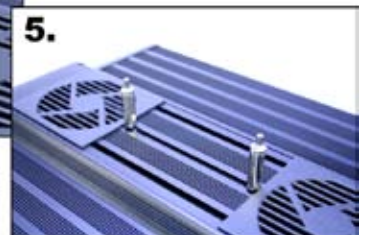
Begin by noting the two different ends of the steel cables. One end will have steel bolt. This is the stopper end and it goes anchor-side. The other will be a bare line. This end threads through the cable clamp and is fixture-side.

At this point, do not attempt to trim/shorten or crimp any of the cables.

## Assembling the Suspension Kit

Locate the rubber O-rings and loop them over each of the threaded ends of the Cable Clamps.

Take each Cable Clamp and install to the Illumina fixture by threading the bolts through the adjustable suspension bridges found in the center channel of the fixture. Hand-tighten only.



## CHAPTER 2: Basics

.....

### Installing Your Illumina SR

Next, take the bare end of the cable and thread it through the eye-hole of the male end of the Socket Anchor. Pull it until the cable is fully threaded through the fitting as shown. The stopper will hold once it reaches the eye-hole of the fitting.



Now take the cable and thread it through the Cable Clamp. It will push out from the side wedge of the fitting and can be pulled through from there. Continue to pull the cable through the fitting. Do not worry if you draw too much length, as this can later be adjusted.

You can use the central channel to hide any excess cable.



# CHAPTER 2: Basics

---

## Installing Your Illumina SR



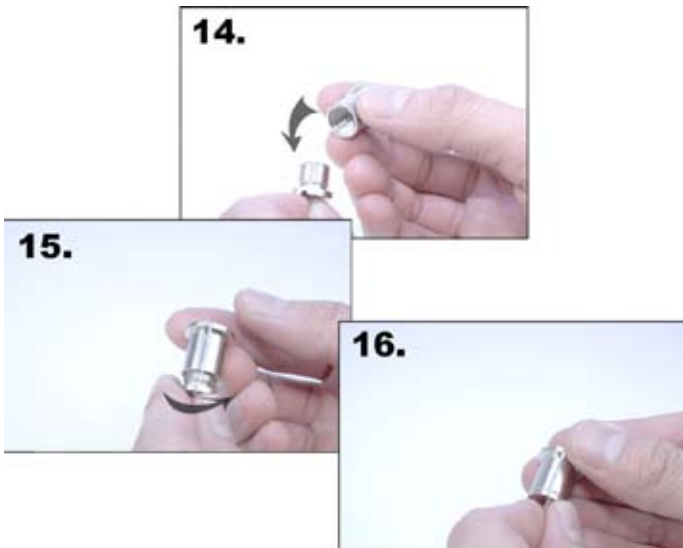
### SOCKET ANCHOR (CEILING/FEMALE)

The Female side of the Socket Anchor is the base point for suspending the fixture. In order to mount this part, you will need a sturdy surface (such as a wooden crossbeam – please refer to the weight chart and consult with an expert prior to installation) and an appropriate screw/bolt of at least 2" in length.

Be sure that the head of the fastener is not larger than the inner diameter of the anchor and affix as shown.

When setting the anchors, consideration must be taken into account for the length of the fixture and the width between the (adjustable) suspension bridges. See the following table for optimal spacing between each suspension bridge:

MODEL	SUSPENSION BRIDGE SPACING (Centered Positioning)	
SR 300	110mm	4.25"
SR 600	410mm	16.1"
SR 900	610mm	24.0"
SR 1200	1010mm	39.75"
SR 1500	1310mm	51.5"
SR 1800	1610mm	63.4"



With the female Socket Anchors properly spaced and installed, you will now be able to thread the male adapters in, completing the mounting process.

Draw the cables through the cable clamps as desired. A leveling ruler is recommended to achieve perfect horizontal balance.

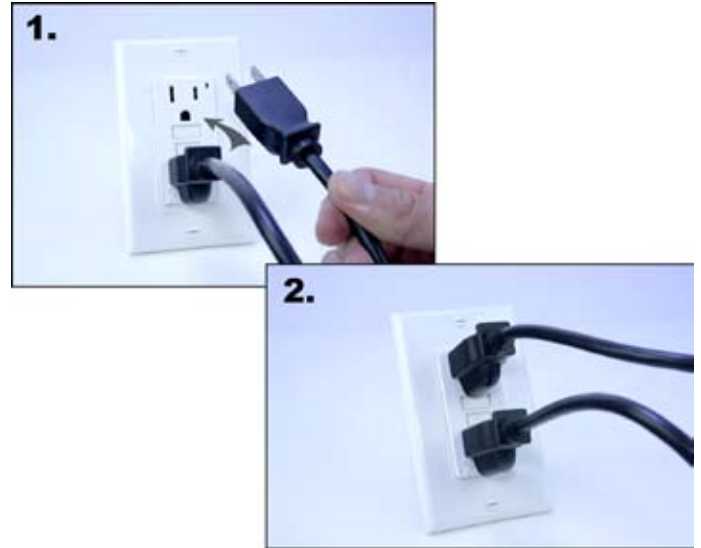
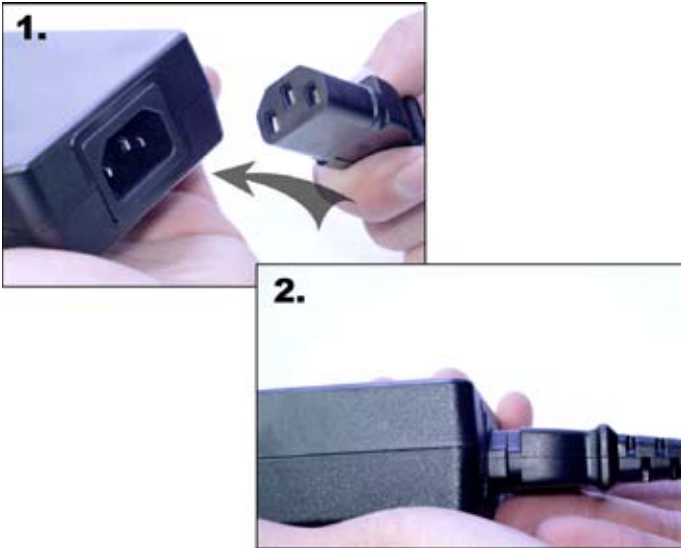
Before powering up the fixture, ensure that the unit and surrounding area are free of dust and humidity.

# CHAPTER 2: Basics

---

## Installing Your Illumina SR

To begin powering up your Vertex Illumina, first plug all the power cables to their respective Mean Well AC Adapter / Driver Units. Then connect each of the power cables into a GFCI/ Surge Protected electrical outlet.



Before plugging the fixture into an wall outlet, arrange the cord in an anti-drip loop as pictured to the left.

This arrangement will prevent any dripping water from entering the electrical socket.

Failure to accomodate for this simple measure can lead to a fire hazzard. This is true of all electrical appliances within the vicinity of the aquarium or any body of water.

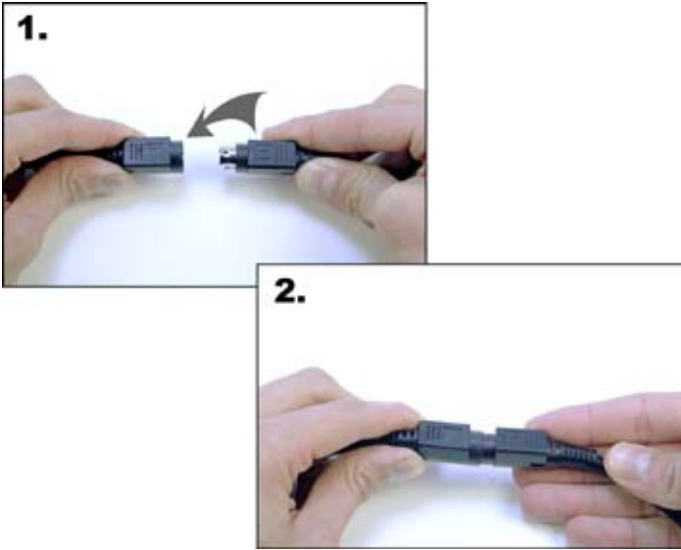
Once all of the Drivers are assembled and plugged to a power source, you can proceed to connecting the control cable of the Illumina fixture.

Depending on which model you have, the process will differ slightly.

# CHAPTER 2: Basics

---

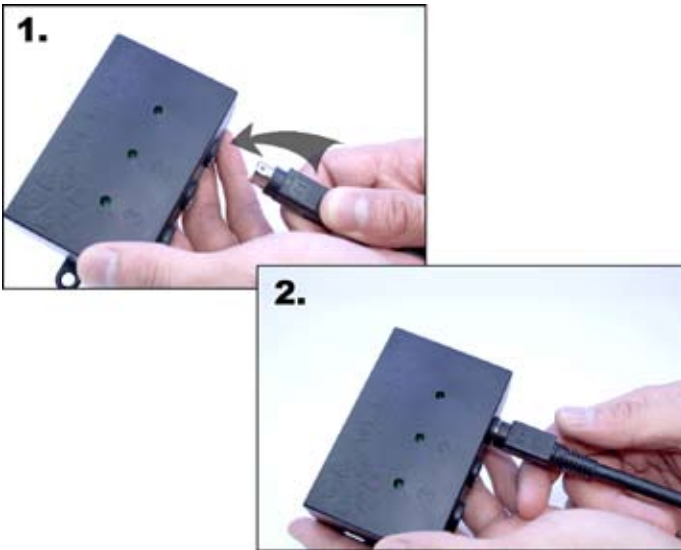
## Installing Your Illumina SR



### SR 300 & 600

To power up these models, connect the Control Cable from the fixture to the AC Adapter / Driver connector cable.

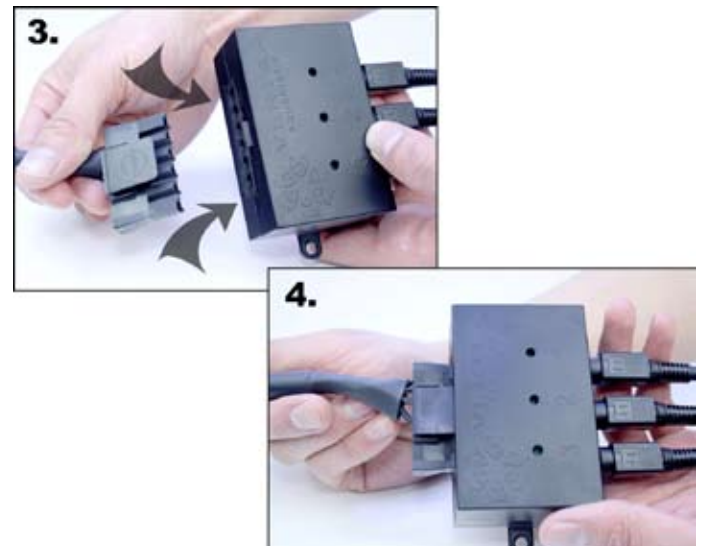
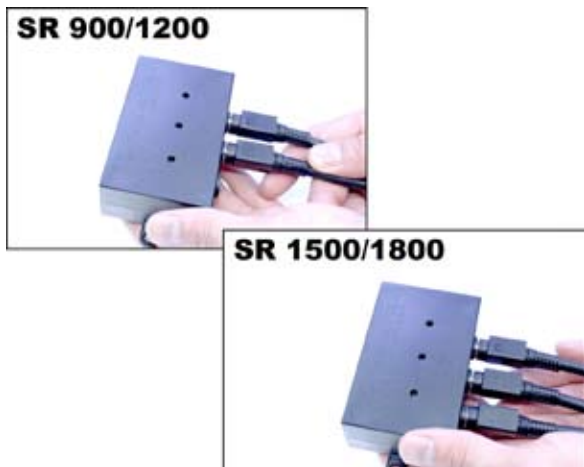
Once properly connected, the display module on your Illumina should light up and begin Initializing. After a few moments, you will be ready to begin programming your lights.



### SR 900 - 1800

Begin by plugging the AC Adapter / Driver connector cables to each of the slots in the Splitter Box. Plug each connector in sequentially. See image below for details per model.

Connect the Control Cable of the fixture to the splitter box. The Illumina will begin initializing and, after a few moments, be ready for programming.



# CHAPTER 2: Basics

## Operation

With your Vertex Illumina is powered up, you will now be able to program your lighting spectrum and schedule.

## Button Controls



The Vertex Illumina interface consists of a viewing screen and four control buttons.

The function of each of the buttons is as follows:

1. **SELECT / OK:** Confirms selection within main menus. Scrolls to next parameter/option within submenus. Press once to select next, hold exit submenu and save settings.
2. **▲ / + :** Next selection within menus. Parameter value up within submenus.
3. **▼ / - :** Previous selection within menus. Parameter value up within submenus.

4. **ESC:** Cancels selection to previous screen within main menus. Scrolls to the previous parameter/option within submenus. Press once to select previous, hold to exit submenu without saving settings.

## System Interface

Use the following table to familiarize yourself with the functions of the Illumina interface:

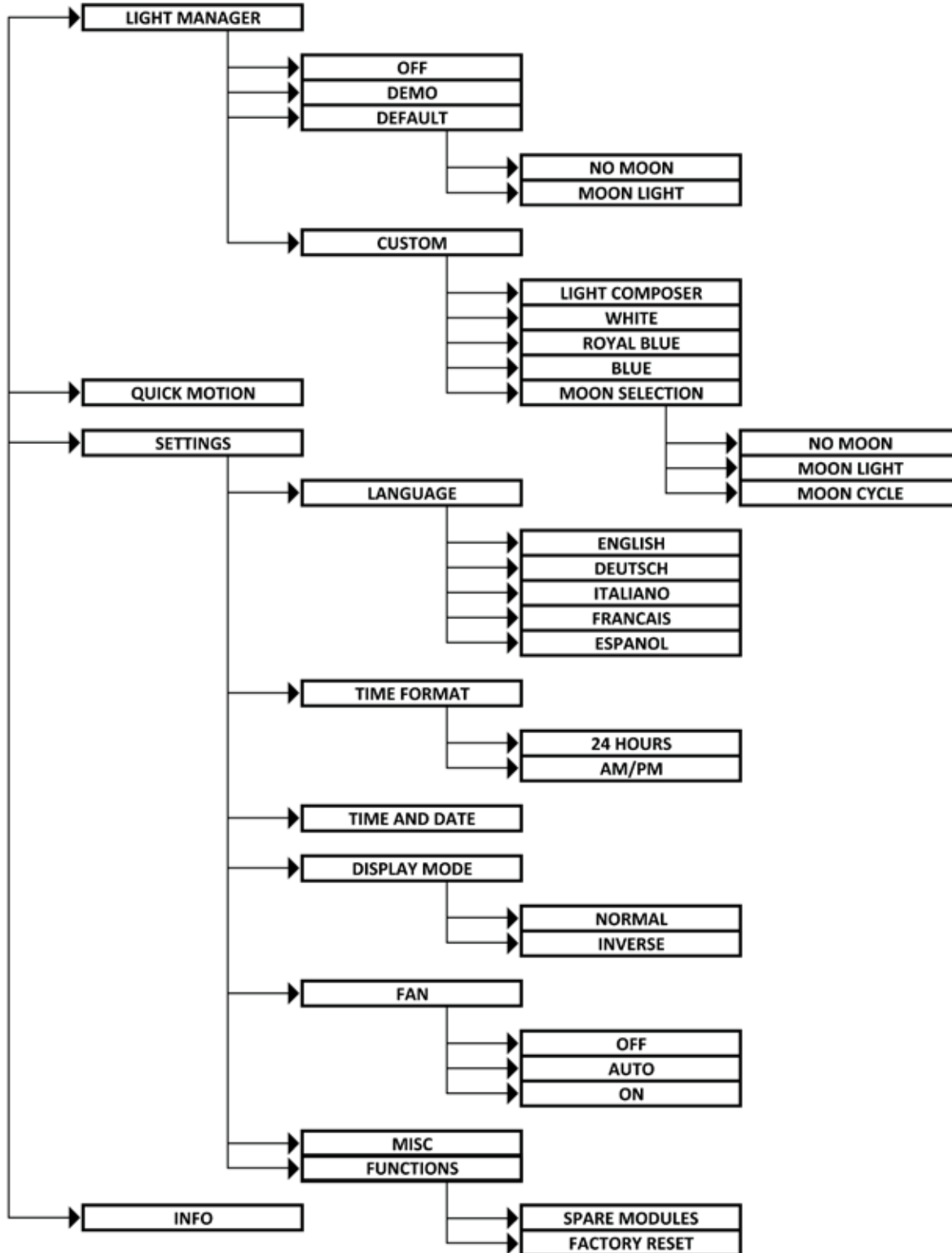
REF.	FUNCTION	REF.	FUNCTION	REF.	FUNCTION
<b>1</b>	<b>LIGHT MANAGER</b>	<b>2</b>	<b>QUICK MOTION</b>	3-5	FAN
1-1	OFF	<b>3</b>	<b>SETTINGS</b>	3-5-1	OFF
1-2	DEMO	3-1	LANGUAGE	3-5-2	AUTO
1-3	DEFAULT	3-1-1	ENGLISH	3-5-3	ON
1-3-1	NO MOON	3-1-2	DEUTSCH	3-6	MISC
1-3-2	MOON LIGHT	3-1-3	ITALIANO	3-7	FUNCTIONS
1-4	CUSTOM	3-1-4	FRANCAIS	3-7-1	SPARE MODULES
1-4-1	LIGHT COMPOSER	3-1-5	ESPAÑOL	3-7-2	FACTORY RESET
1-4-2	WHITE	3-2	TIME FORMAT	<b>4</b>	<b>INFO</b>
1-4-3	ROYAL BLUE	3-2-1	24 HOURS		
1-4-4	BLUE	3-2-2	AM/PM		
1-4-5	MOON SELECTION	3-3	TIME AND DATE		
1-4-5-1	NO MOON	3-4	DISPLAY MODE		
1-4-5-2	MOON LIGHT	3-4-1	NORMAL		
1-4-5-3	MOON CYCLE	3-4-2	INVERSE		

# CHAPTER 2: Basics

---

## Menu Structure

Use the following table to orient yourself within the menus:



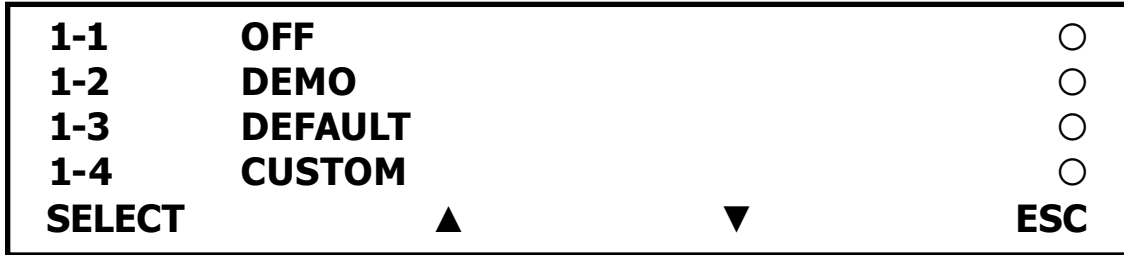
# CHAPTER 3: Advanced Features

.....

## Light Manager (Main Menu 1)

The Light Manager is the main interface from which you will program your Vertex Illumina.

Within it, you will find the following functions:



### Functions

**1-1 OFF:** Select this function and hold the SELECT button to turn the unit off.

**1-2 DEMO:** Select this function and hold the SELECT button to begin a preprogrammed demo mode.

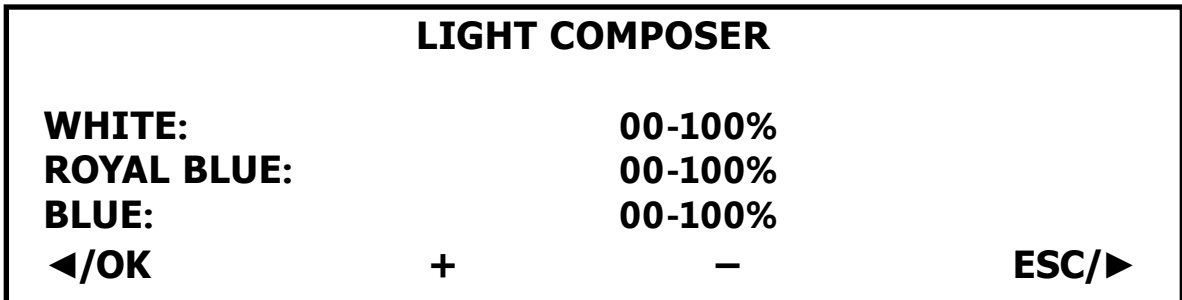
**1-3 STANDARD:** Make Moon Light selections here:

**1-3-1 NO MOON:** No Moon Light cycle.

**1-3-2 MOON LIGHT:** Standard Moon Light function. See Section 1-4-5-2 on the following page.

**1-4 CUSTOM:** This Submenu contains all of the User configurable light settings:

**1-4-1 LIGHT COMPOSER:** This application allows you to create and test specific light outputs and uses the following interface:



Use the **◀/OK** and **ESC/▶** buttons to scroll between the channels. Use the **+** and **-** buttons to adjust the values to the desired level. Press and hold **◀/OK** to exit the Light Composer while retaining your color composition (no lighting schedule). Press and hold **ESC/▶** exit without saving any settings.

# CHAPTER 3: Advanced Features

.....

## Light Manager (Main Menu 1)

**Functions** cont.

**1-4-2 WHITE / 1-4-3 ROYAL BLUE / 1-4-4 BLUE:** These options allow you to configure each LED color channel independantly. Within the selections, you will find the following interface:

CHANNEL NAME			
<b>INTENSITY:</b>		<b>00-100%</b>	
<b>SUNRISE:</b>		<b>00:00AM</b>	
<b>RISETIME:</b>		<b>00:00H</b>	
<b>SUNSET:</b>		<b>00:00PM</b>	
<b>DAWNTIME:</b>		<b>00:00H</b>	
<b>◀/OK</b>	<b>+</b>	<b>-</b>	<b>ESC/▶</b>

Press and hold **◀/OK** to exit each channel while retaining your color composition (no lighting schedule). Press and hold **ESC/▶** exit without saving any settings.

**1-4-5 MOON SELECTION:** Use this Submenu to control the Moon Light behavior of your Illumina within the your light schedule.

**1-4-5-1 NO MOON:** No Moon Light cycle.

**1-4-5-2 MOON LIGHT:** Standard Moon Light with intensity adjustment:

MOONLIGHT			
<b>INTENSITY:</b>		<b>00-100%</b>	
<b>◀/OK</b>	<b>+</b>	<b>-</b>	<b>ESC/▶</b>

**1-4-5-3 MOON CYCLE:** Use this option if you want the Moon Light to operate on a montly Lunar Cycle. The Illumina will simulate the natural wax and wane phases of the moon:

LUNAR CYCLE			
<b>INTENSITY:</b>		<b>00-100%</b>	
<b>FULL MOON IN:</b>		<b>00-28DAYS</b>	
<b>◀/OK</b>	<b>+</b>	<b>-</b>	<b>ESC/▶</b>

# CHAPTER 3: Advanced Features

.....

## Quick Motion (Main Menu 2)

The Quick Motion feature allows you to quickly test and adjust any Custom settings you have defined and saved using the Light Manager. Once selected, the Quick Motion will quickly run the Illumina through an accelerated light cycle. You can exit at any time by pressing any of buttons on the control console.

## Settings (Main Menu 3)

Use this menu to configure the interface functionality of the Illumina:

<b>3-1</b>	<b>LANGUAGE</b>		
<b>3-2</b>	<b>TIME FORMAT</b>		
<b>3-3</b>	<b>TIME AND DATE</b>		
<b>3-4</b>	<b>DISPLAY MODE</b>		
<b>3-5</b>	<b>FAN</b>		
<b>3-6</b>	<b>MISC</b>		
<b>3-7</b>	<b>FUNCTIONS</b>		
<b>SELECT</b>		<b>▲</b> <b>▼</b>	<b>ESC</b>

## Functions

**3-1 LANGUAGE:** Select from a list of languages:

<b>3-1-1</b>	<b>ENGLISH</b>	<input type="radio"/>
<b>3-1-2</b>	<b>DEUTSCH</b>	<input type="radio"/>
<b>3-1-3</b>	<b>ITALIANO</b>	<input type="radio"/>
<b>3-1-4</b>	<b>FRANCAIS</b>	<input type="radio"/>
<b>3-1-5</b>	<b>ESPANOL</b>	<input type="radio"/>
<b>SELECT</b>		<b>▲</b> <b>▼</b> <b>ESC</b>

Press and hold ◀/OK to select and save your language. Press and hold ESC/▶ exit without saving any settings.

**3-2 TIME FORMAT:** Use this menu to select between 24 Hour mode (3-2-1) and AM/PM mode (3-2-2).

**3-3 TIME AND DATE:** Set the time by using the ◀/OK and ESC/▶ buttons to toggle between the time values. Use the + and – buttons to adjust each value. Press and hold ◀/OK to select and save your time settings. Press and hold ESC/▶ exit without saving any settings.

# CHAPTER 3: Advanced Features

.....

## Settings (Main Menu 3)

### Functions cont.

**3-4 DISPLAY MODE:** Toggling the display mode will change backlighting of the interface display. Make your selection by pressing and holding ◀/OK to select and save the setting. Press and hold ESC/▶ exit without saving any settings.

**3-5 FAN:** The fan settings can be adjusted to OFF (3-5-1), AUTO (3-5-2, recommended), or ON (3-5-3).

**3-6 MISC:** Use this setting to adjust the Radio Channels between 01-15 to compensate for any interference between the Vertex Illumina, the V-Link accessory and other remote devices.

**3-7 FUNCTIONS:** This menu has the optional SPARE MODULES (3-7-1) and FACTORY RESET (3-7-2) selections. SPARE MODULES is initially deactivated, but can be accessed with the installation of optional Auxiliary Modules and their support firmware. Further details regarding these items are available from authorized Vertex Aquaristik dealers.

Use FACTORY RESET to clear user-programmed settings from the unit. Make your selection by holding ◀/OK. **WARNING - Settings, once reset, are deleted permanently.**

## Info (Main Menu 4)

**4 INFO:** This selection displays the serial numbers and current software versions installed on your fixture. It is recommended that you keep your Illumina up to date with the latest software which can be found on the Vertex Aquaristik website: [www.vertexaquaristik.com](http://www.vertexaquaristik.com).

## Updating Your Illumina Firmware

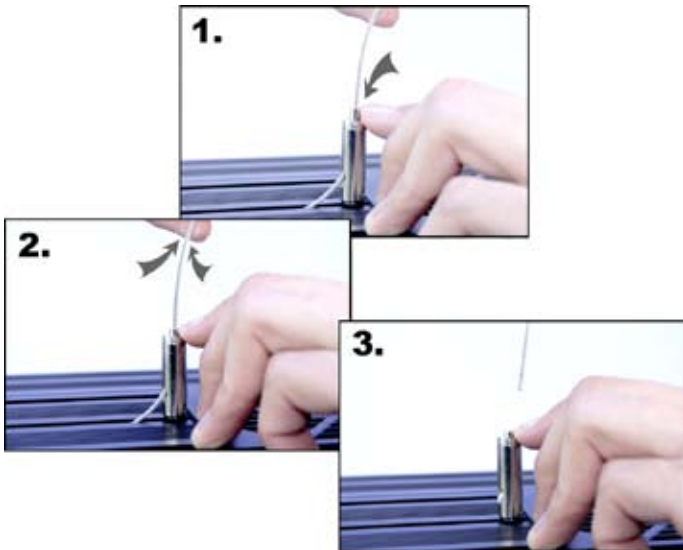
In order to update your Fixture, you will require a V-Link USB Stick. This accessory can be purchased at your authorized Vertex Aquaristik retailer.

# CHAPTER 4: Maintenance

---

## Considerations and Guidelines

Your Vertex Illumina must be routinely maintained to keep it performing optimally. Be sure to unplug all power to the unit (by disconnecting the control cable from the Splitter Box). For thorough cleaning, you will also want to dismount the fixture from the hanging kit.



To extract the Steel Cables from the Cable Clamps, you will first want to ensure that the Illumina fixture is supported and/or removed from its position over the display.

Begin by firmly depressing the lock fitting into the body of the Cable Clamp. This will loosen the binding mechanism and allow you to pull the Steel Cable away from the Cable Clamp.

Repeat with the other Cable Clamp and you will not be ready to perform routine maintenance on your fixture.

Before you beginning with any further maintenance operations, be mindful of the following points:

- Do not attempt to disassemble your Vertex Illumina without specific instruction. This action should only be done by an authorized Vertex technician and any failure caused by user error will void the warranty of the unit.
- Do not clean with harsh acidic or alkaline cleaners/solvents which may destroy the finish.
- Do not power the unit during the cleaning process.
- The Illumina is humidity resistant, but not waterproof. Do not immerse or attempt to cleanse the fixture with water or solvents. Always apply any cleansers to a soft cloth (Microfiber or commercially available dusting materials) and never directly to the body of the fixture.
- Always take your Illumina to an authorized Vertex dealer for any concerns regarding the maintenance and/or replacement of internal components. Damages caused by user error will void the warranty of the unit.
- Always mount the electrical components of the fixture away from humidity and moisture.
- Only plug the Illumina into a GFCI and surge protected power supply. Failure to do so will void the warranty of the unit

# CHAPTER 4: Maintenance

---

## Cleaning the Central Air Shaft

The Central Air Shaft is crucial towards maintaining proper operating temperatures and LED output life. Therefore, it is recommended that you clean perform routine maintenance to keep the shaft free of dust and other particulates.



Note: Do not attempt to open the the body to access the Air Shaft. Do not pour liquids into the air shaft.

Use commercially available Air Dusters / Canned Air products to expel dust from channel. It is recommended that you this in a well ventilated/ outdoor area.

Follow the guidelines on the product and spray the pressurized air in short burst beginning from one side of the fixture (through each of the fans/ air vents) and progressing to the other side of the fixture.

Once the Central Air Shaft is properly cleaned, you can now begin cleaning the main body of the fixture.

## Removing Dust and Debris

A microfiber cloth is recommended for this step. Do not use any abrasives or harsh chemicals to clean the body as they may destroy the finish.



Remove surface dust by gently wiping all exposed surfaces of the Illumina with a slightly dampened microfiber cloth. Be sure to clean the underside of the unit to maintain optimal heat dispersion.

To remove any salt/water stains or calcifications, use a mild soap solution along with the microfiber cloth. Do not apply the cleansing solution directly to the fixture.

Use only a microfiber cloth and water to clean the splash shield and end panels.

If damp, allow the unit to fully dry fully before reinstalling over the display.

## CHAPTER 5: Additional Information

.....

### LED Modules

Each Vertex Illumina fixture can be upgraded with new LED Modules, allowing you to adopt the latest technologies and/or further refine the light spectrum.

Refer to the following table for LED Module information:

<b>Model</b>	<b>LED Modules</b>	<b>Auxiliary Slots</b>
SR 300	2	1
SR 600	4	3
SR 900	6	5
SR 1200	8	7
SR 1500	10	9
SR 1800	12	11

Installation information for LED upgrades and Auxiliary Modules are included with the respective products. All modules should only be installed by an authorized Vertex technician. Damages resulting from user error will not be covered by the warranty.

For more information regarding Auxiliary Modules and other upgrades, please visit the Vertex Aquaristik website at [www.vertexaquaristik.com](http://www.vertexaquaristik.com).

### Firmware Upgrade

It is recommended that you keep your Illumina Firmware upgraded to the latest version (please refer to the Vertex Aquaristik website - [www.vertexaquaristik.com](http://www.vertexaquaristik.com)) prior to installing any modules or uploading light management software to the fixture.

Please refer to the Vertex V-Link Owner's Manual for more information.

# CHAPTER 5: Additional Information

## FAQ and Troubleshooting

PROBLEM	CHECK	SOLUTIONS
Fixture will not power up.	Models SR 300 - SR600	Check the power source and make sure all connections are firm and undamaged.
	Models SR 900 - SR 1800	Follow connection instructions (pg. 12 to 13) being sure to connect all power sources to the Splitter Box <b>PRIOR</b> to connecting the Control Cable from the fixture.
	Mean Well AC Adapter	Make sure all connections are firm and undamaged. Be sure only to plug the Drivers only to a GFCI and Surge Protected electrical outlet.
Fixture is powered but LED Pads are not illuminating.	Light Manager (Menu 1)	Make sure the Light Manager is not set to 'OFF'. Follow the guidelines in Chapter 3 (pg. 16 to 19) to program a light schedule.
		Check the Light Composer (menu 1-4-1) and Color Channels (menus 1-4-2 to 1-4-4) and make sure at least one of the channels is set above 0%.
	Time and Date (Submenu 3-3)	Callibrate the Time and Date with the current schedule, e.g. Make sure AM and PM settings are correct.
Fans are not running.	Fan (Submenu 3-5)	Check settings and make sure Fans are set to 'AUTO' or 'ON'. The 'AUTO' setting only turns on the fans when the fixture reaches a the fixtures temperature threshold.
Fixture is running extremely hot/over-heating.	Fan (Submenu 3-5)	Check settings and make sure Fans are set to 'AUTO' or 'ON'. The 'AUTO' setting only turns on the fans when the fixture reaches a the fixtures temperature threshold.
Individual LED's and/or LED Modules are not running.	Models SR 900 - SR 1800	Follow connection instructions (pg. 12 to 13) being sure to connect all power sources to the Splitter Box <b>PRIOR</b> to connecting the Control Cable from the fixture.
	Color Channels	Check the Light Composer (menu 1-4-1) and Color Channels (menus 1-4-2 to 1-4-4) and make sure at least one of the channels is set above 0%.
	Individual LED Modules	If all Color Channels are functioning properly, check with your authorized Vertex dealer.
Moonlights are not running.	Moon Selection - Moon Cycle (Option 1-4-5-3)	If set to the 'MOON CYCLE' option, Moon Lights may not illuminate during the days of the 'New Moon'. Increase the Moon Light intensity to change this.
	Moon Light intensity	Check your Moon Light intensity options. During Moon Cycles, the Illumina will automatically shut down any LED`s that begin to flicker due to low current input. Increase your intensity to correct this.
Main body of the fixture is rusting.	Display installation	Be sure that no water is splashing onto the unit. This type of damage is not covered by warranty.
LED Splash Gaurd is bubbling/damaged	Display installation	Do not sit the Illumina fixture directly on top of any surfaces. This type of damage is not covered by warranty.

# CHAPTER 5: Additional Information

.....

## Warranty Information

The Vertex Illumina LED Fixture comes with a two (2) year limited Manufacturer warranty.

The Mean Well AC Adapter(s) come with a two (2) year limited Manufacturer warranty.

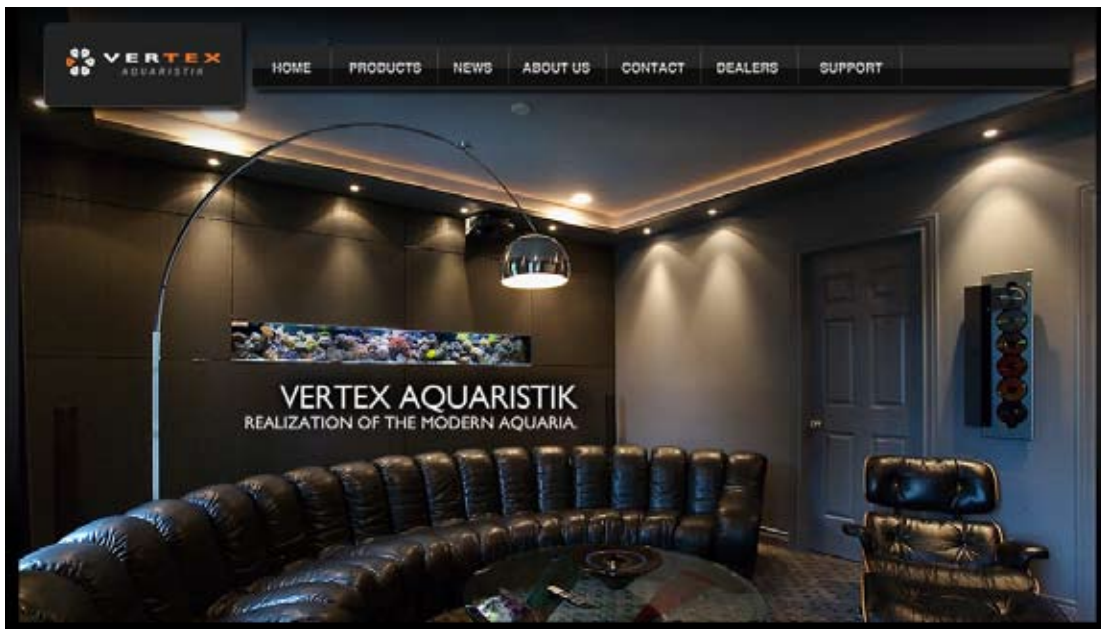
Parts that have been damaged due to user error and misuse will not be eligible for warranty replacement. Vertex Aquaristik reserves the right to warranty products based upon inspection.

All warranty related issues should be handled at the point of purchase location by trained staff. Please contact your dealer for warranty replacement services.

## Contacts

For additional information regarding this or any other Vertex Aquaristik products, please either consult with your dealer or the following resources:

## Vertex Aquaristik



**website:** [www.vertexaquaristik.com](http://www.vertexaquaristik.com) | **email:** [info@vertexaquaristik.com](mailto:info@vertexaquaristik.com)

## Thank You